

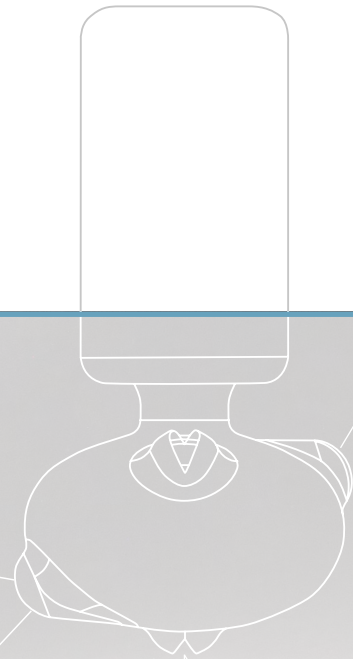
ENGINEERING
YOUR SPRAY SOLUTION



➤➤ ROTATING CLEANING NOZZLE WHIRLY 2

Series 5W9

INDUSTRY



Rotating cleaning nozzle Whirly 2 Series 5W9



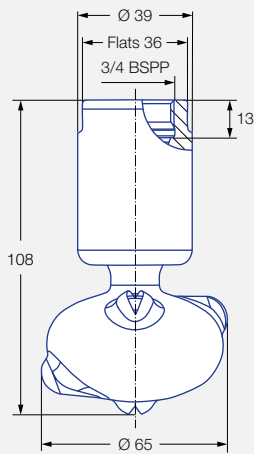
Features:

- Popular design in a hygienic version
- Cleaning with effective flat jets
- Various connection options
- Available with a wide range of flow rates and spray angles

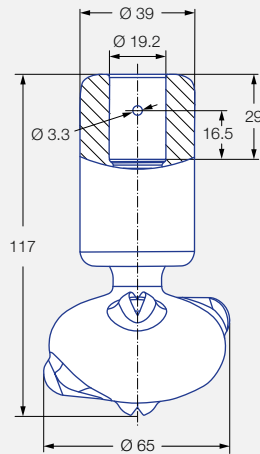


ATEX version available on request

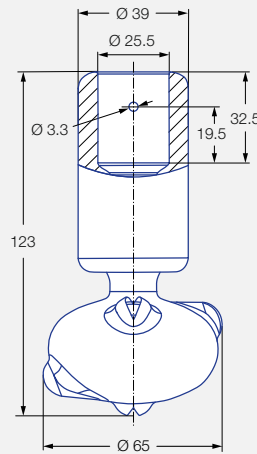
Series 5W9



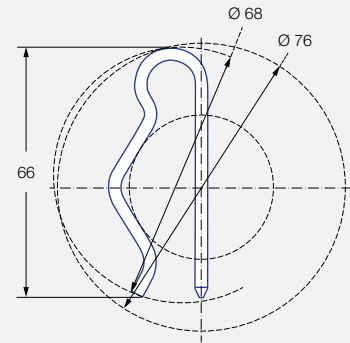
Female thread



Dimensions slip-on connection according to ASME-BPE (OD-tube)



Dimensions slip-on connection according to ASME-BPE (OD-tube)



Dimensions slip-on connection top-view

Max. tank diameter [m]	0	1	2	3	4	5	6	7	8	9
------------------------	---	---	---	---	---	---	---	---	---	---

Cleaning efficiency class
3

Max. temperature
140 °C

Installation
Operation in every direction is possible

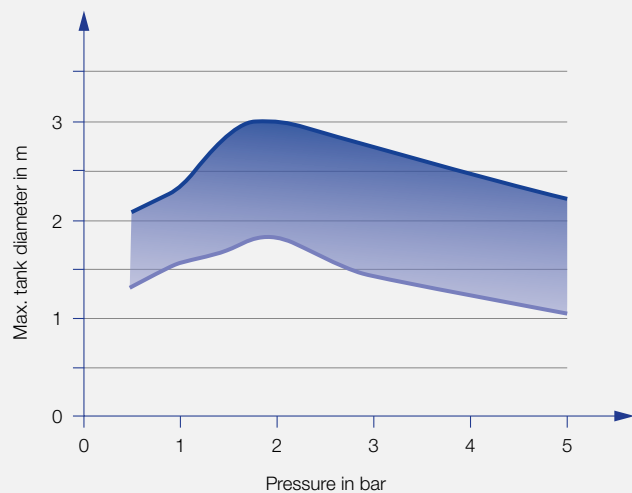
Bearing
Double ball bearing made of 316L

Materials
316L, PEEK

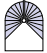


Recommended operating pressure
2 bar

Filtration
Line strainer with a mesh size of 0.1 mm/170 Mesh

Adapter
3/4 BSPP is compatible with HygienicFit



— 5W9.279
— 5W9.079

Spray angle	Ordering no.				Narrowest free cross section Ø [mm]	V̇ water [l/min]				Max. tank diameter [m]
	Type	Connection				p [bar] (p _{max} = 6 bar)				
		3/4 BSPP	3/4"- Slip-on connection	1" Slip-on connection		1,0	2,0	3,0	at 40 psi [US gal/min]	
270° 	5W9.075.1Y	AL	TF07	TF10	2,0	34	48	59	15	1,8
	5W9.145.1Y	AL	TF07	TF10	2,8	50	71	87	22	2,1
	5W9.195.1Y	AL	TF07	TF10	3,3	69	97	119	30	2,6
270° 	5W9.076.1Y	AL	TF07	TF10	2,0	34	48	59	15	1,8
	5W9.106.1Y	AL	TF07	TF10	2,5	41	58	71	18	2,1
	5W9.196.1Y	AL	TF07	TF10	3,4	69	97	119	30	2,6
360° 	5W9.079.1Y	AL	TF07	TF10	1,6	34	48	59	15	1,8
	5W9.149.1Y	AL	TF07	TF10	2,4	50	71	87	22	2,1
	5W9.199.1Y	AL	TF07	TF10	3,0	69	97	119	30	2,6
	5W9.279.1Y	AL	TF07	TF10	3,5	103	145	178	45	3,0

NPT thread available on request.

The maximum tank diameter applies to the recommended operating pressure and is meant as a recommendation only. The cleaning result is also affected by the type of soiling.

Compressed air should be used for dry blowing for a short time only. Operation above the recommended operating pressure has a negative impact on the cleaning result and wear.

Information about slip-on connections

- Pin made of stainless steel 316L supplied (Ordering no.: 095.013.1Y.06.72.0).
- Depending on the diameter of the adapter, the flow rate can increase due to a leakage between the adapter and the rotating cleaning nozzle.
- Minimum insertion diameter (with mounted pin) is 68 mm.

Example of ordering: Type + Connection = Ordering no.
5W9.075.1Y + AL = 5W9.075.1Y.AL

Clean performance.
For pure hygiene.

Whirly 2



Function video
www.lechler.com/de-en/medialibrary
Or scan the QR Code.

**ENGINEERING
YOUR SPRAY SOLUTION**



Lechler GmbH · Precision Nozzles · Nozzle Systems
Ulmer Strasse 128 · 72555 Metzingen, Germany · Phone +49 7123 962-0 · info@lechler.de · www.lechler.com

Edition 08/21 · EN · PDF
Subject to technical modifications or mistakes.