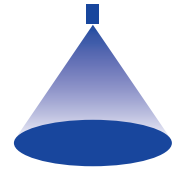


➤ Axial-Vollkegeldüsen Baureihe 405

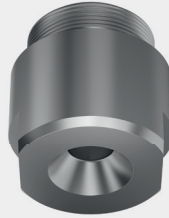


Eigenschaften:

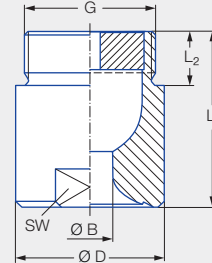
- Besonders gleichmäßige Flüssigkeitsverteilung

Anwendungen:

- Flächenberieselung
- Chemische Verfahrenstechnik
- Reinigungs- und Waschprozesse
- Wasseraufbereitung



Baureihe 405



| Anschluss | G | Abmessungen [mm] | | | | Gewicht [kg] (Messing) |
|-----------|-------------------|------------------|----------------|------|----|------------------------|
| | | L ₁ | L ₂ | Ø D | SW | |
| AP | G 1 1/4 A ISO 228 | 50,0 | 19,0 | 49,0 | 41 | 0,5 |
| AR | G 1 1/2 A ISO 228 | 60,0 | 19,0 | 59,0 | 50 | 0,9 |
| AV | G 2 A ISO 228 | 78,0 | 24,0 | 68,0 | 60 | 1,6 |

| Strahlwinkel | Bestell-Nr. | | | | | | Bohrungsdurchmesser B [mm] | Engster Querschnitt Ø [mm] | V̇ Wasser [l/min] | | | | | | Strahldurchmesser D [mm] (bei p = 2 bar) | |
|--------------|----------------|------------------|----------------|-------------------|-------------------|---------------|----------------------------|----------------------------|-------------------|-----|-----|------------|-----|-----|--|----------------|
| | Type | Mat.-Nr. | | Anschluss | | | | | p [bar] | | | | | | H = 500 [mm] | H = 1.000 [mm] |
| | | 1Y | 30 | G 1 1/4 A ISO 228 | G 1 1/2 A ISO 228 | G 2 A ISO 228 | | | 0,3 | 0,5 | 1,0 | 2,0 | 3,0 | 5,0 | | |
| | | Edelstahl 1.4404 | Messing 2.0401 | | | | | | | | | | | | | |
| 60° | 405.204 | ● | ● | AP | | | 11,2 | 5,8 | 47 | 57 | 76 | 100 | 118 | 144 | 600 | 1.140 |
| | 405.284 | ● | ● | | AR | | 14,3 | 7,0 | 75 | 92 | 121 | 160 | 188 | 231 | 630 | 1.210 |
| | 405.324 | ● | ● | | | AV | 16,4 | 7,5 | 94 | 115 | 152 | 200 | 235 | 289 | 650 | 1.250 |
| | 405.364 | ● | ● | | | AV | 18,4 | 8,5 | 117 | 144 | 189 | 250 | 294 | 361 | 650 | 1.250 |
| | 405.404 | ● | ● | | | AV | 20,0 | 7,0 | 147 | 181 | 239 | 315 | 370 | 454 | 650 | 1.250 |
| 90° | 405.206 | ● | ● | AP | | | 12,0 | 5,0 | 47 | 57 | 76 | 100 | 118 | 144 | 1.120 | 2.100 |
| | 405.286 | ● | ● | | AR | | 15,2 | 6,2 | 75 | 92 | 121 | 160 | 188 | 231 | 1.120 | 2.100 |
| | 405.326 | ● | ● | | | AV | 17,2 | 7,7 | 94 | 115 | 152 | 200 | 235 | 289 | 1.120 | 2.100 |
| | 405.366 | ● | ● | | | AV | 19,5 | 8,7 | 117 | 144 | 189 | 250 | 294 | 361 | 1.120 | 2.100 |
| | 405.406 | ● | ● | | | AV | 22,0 | 9,5 | 147 | 181 | 239 | 315 | 370 | 454 | 1.120 | 2.100 |
| 120° | 405.208 | ● | ● | AP | | | 12,7 | 5,0 | 47 | 57 | 76 | 100 | 118 | 144 | 1.850 | 3.050 |
| | 405.288 | ● | ● | | AR | | 16,0 | 6,6 | 75 | 92 | 121 | 160 | 188 | 231 | 1.900 | 3.150 |
| | 405.328 | ● | ● | | | AV | 17,8 | 7,9 | 94 | 115 | 152 | 200 | 235 | 289 | 1.900 | 3.200 |
| | 405.368 | ● | ● | | | AV | 20,1 | 8,8 | 117 | 144 | 189 | 250 | 294 | 361 | 1.900 | 3.200 |
| | 405.408 | ● | ● | | | AV | 22,4 | 9,1 | 147 | 181 | 239 | 315 | 370 | 454 | 1.900 | 3.200 |

Umrechnungsformel für diese Baureihe: $\dot{V}_2 = \dot{V}_1 \cdot \left(\frac{p_2}{p_1}\right)^{0,4}$
(≤ 10 bar)

Bestell- Type + Material-Nr. + Anschluss = Bestell-Nr.
beispiel: 405.204 + 1Y + AP = 405.204.1Y.AP



Montagezubehör finden Sie im Kapitel 9 „Zubehör“.