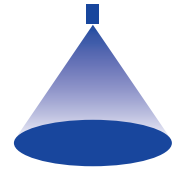
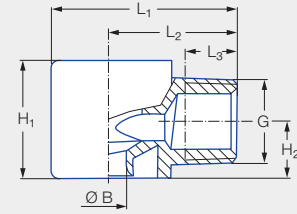
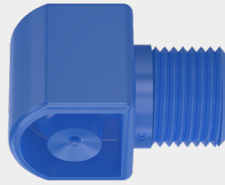


➤ Tangential-flow full cone nozzles, plastic version Series 422/423



Features:

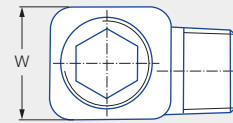
- Tangentially arranged supply of liquid
- Without swirl inserts
- Non-clogging
- Stable spray angle
- Uniform liquid distribution
- High chemical resistance



Applications:

- Surface spraying
- Cooling
- Cleaning and washing processes
- Foam control

Series 422/423



Code	G	Dimensions [mm]						Weight [g]
		H ₁	H ₂	L ₁	L ₂	L ₃	Flats	
CC	1/4 BSPT	16.0	8.0	28.0	20.0	9.8	16.0	7.0
CE	3/8 BSPT	23.0	11.2	36.0	25.0	10.1	22.0	16.0
CG	1/2 BSPT	38.0	19.2	49.5	33.5	13.2	32.0	40.0
CK	3/4 BSPT	50.0	24.5	58.5	38.5	18.5	41.0	50.0

Spray angle	Ordering no.						Bore diameter B [mm]	Narrowest free cross sections Ø [mm]	V̇ water [l/min]						Spray diameter D [mm] (at p = 2 bar)	
	Type	Mat. no.	Code						p [bar]						H = 250 [mm]	H = 500 [mm]
		5E	1/4 BSPT	3/8 BSPT	1/2 BSPT	3/4 BSPT			0.5	1.0	2.0	3.0	5.0	10.0		
60°	422.724	●		CE			3.60	3.60	3.15	4.45	6.30	7.72	9.96	14.09	320	560
90°	422.406	●	CC				1.50	1.45	0.50	0.71	1.00	1.22	1.58	2.24	530	900
	422.566	●	CC				2.30	2.20	1.25	1.77	2.50	3.06	3.95	5.59	530	920
	422.606	●		CE			2.60	2.50	1.58	2.23	3.15	3.86	4.98	7.04	540	920
	422.646	●		CE			3.00	2.90	2.00	2.83	4.00	4.90	6.32	8.94	540	930
	422.726	●		CE			3.70	3.60	3.15	4.45	6.30	7.72	9.96	14.09	550	950
	422.806	●		CE			4.65	4.60	5.00	7.07	10.00	12.25	15.81	22.36	560	980
	422.846	●		CE			5.10	5.10	6.25	8.84	12.50	15.31	19.76	27.95	560	990
	422.886	●		CE			5.80	5.80	8.00	11.31	16.00	19.60	25.30	35.78	570	1,010
	422.926	●			CG		7.30	7.30	10.00	14.14	20.00	24.49	31.62	44.72	570	1,030
	422.966	●			CG		8.00	8.00	12.50	17.68	25.00	30.62	39.53	55.90	580	1,040
	423.006	●			CG		8.70	8.70	15.75	22.27	31.50	38.58	49.81	70.44	580	1,040
423.126	●				CK	12.00	12.00	31.50	44.55	63.00	77.16	99.61	140.87	580	1,050	





Spray angle	Ordering no.						Bore diameter B [mm]	Narrowest free cross sections Ø [mm]	V̇ water [l/min]						Spray diameter D [mm] (at p = 2 bar)	
	Type	Mat. no.	Code						p [bar]						H = 250 [mm]	H = 500 [mm]
		5E	1/4 BSPT	3/8 BSPT	1/2 BSPT	3/4 BSPT			0.5	1.0	2.0	3.0	5.0	10.0		
		PVDF														
120°	422.408	●	CC				1.50	1.45	0.50	0.71	1.00	1.22	1.58	2.24	670	1,200
	422.448	●	CC				1.65	1.60	0.63	0.88	1.25	1.53	1.98	2.80	680	1,210
	422.488	●	CC				1.90	1.90	0.80	1.13	1.60	1.96	2.53	3.58	680	1,230
	422.568	●	CC				2.40	2.40	1.25	1.77	2.50	3.06	3.95	5.59	700	1,260
	422.728	●		CE			4.00	3.90	3.15	4.45	6.30	7.72	9.96	14.09	770	1,400
	422.888	●		CE			6.60	6.00	8.00	11.31	16.00	19.60	25.30	35.78	850	1,560
	422.968	●			CG		8.00	8.00	12.50	17.68	25.00	30.62	39.53	55.90	960	1,620
	423.008	●			CG		8.70	8.70	15.75	22.27	31.50	38.58	49.81	70.44	970	1,630
423.128	●				CK	12.70	12.30	31.50	44.55	63.00	77.16	99.61	140.87	990	1,660	

Conversion formula for this series: $\dot{V}_2 = \dot{V}_1 \cdot \sqrt{\frac{p_2}{p_1}}$

Ordering Type + Material no. + Code = Ordering no.
 example: 422.408 + 5E + CC = 422.408.5E.CC



Assembly accessories can be found in Chapter 9 "Accessories".

