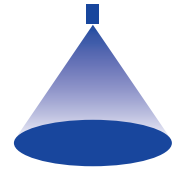


# ➤ Tangential-flow full cone nozzles, plastic version with bayonet quick-release system Series 422

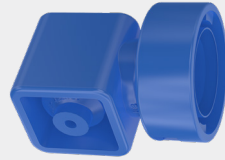


## Features:

- Without swirl inserts
- Non-clogging
- Stable spray angle
- Simple and quick assembly
- Uniform liquid distribution
- High chemical resistance

## Applications:

- Surface spraying
- Cooling
- Cleaning and washing processes
- Foam control



Series 422

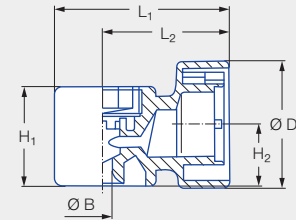
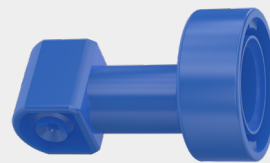


Figure 1

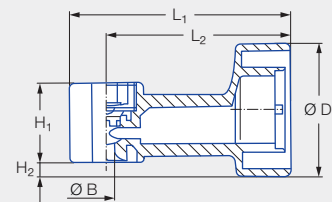




Figure 2

Type	Code	Figure	Dimensions [mm]					Weight [g] (PVDF)
			H <sub>1</sub>	H <sub>2</sub>	L <sub>1</sub>	L <sub>2</sub>	Ø D	
422.644/422.606/422.608	KB	1	23.0	14.0	40.0	29.0	29.5	20.0
422.406/422.408/422.528	KB	2	17.5	3.5	48.0	40.0	29.5	14.0

Spray angle	Ordering no.			Bore diameter B [mm]	Narrowest free cross sections Ø [mm]	V̇ water [l/min]						Spray diameter D [mm] (at p = 2 bar)		
	Type	Mat. no.				Code	p [bar]						 H = 250 [mm]   H = 500 [mm]	
		5E	53											
		PVDF	PP				Bayonet quick-release system	0.5	1.0	2.0	3.0	5.0	10.0	
60°	422.644		●	KB	2.90	2.90	2.00	2.83	4.00	4.90	6.32	8.94	250	490
90°	422.406	●		KB	1.50	1.45	0.50	0.71	1.00	1.22	1.58	2.24	530	900
	422.606	●		KB	2.60	2.50	1.58	2.23	3.15	3.86	4.98	7.04	540	920
120°	422.408	●		KB	1.50	1.45	0.50	0.71	1.00	1.22	1.58	2.24	670	1,140
	422.528	●		KB	2.10	2.00	1.00	1.41	2.00	2.45	3.16	4.47	690	1,220
	422.608	●		KB	2.60	2.50	1.58	2.23	3.15	3.86	4.98	7.04	710	1,260

Conversion formula for this series:  $\dot{V}_2 = \dot{V}_1 \cdot \sqrt{\frac{p_2}{p_1}}$

Ordering Type + Material no. + Code = Ordering no.  
example: 422.644 + 53 + KB = 422.644.53.KB

 Assembly accessories can be found in Chapter 9 "Accessories".