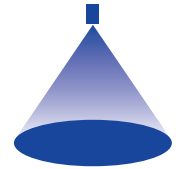


➤ Axial-flow full cone nozzles Series 405

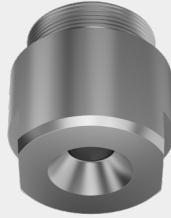


Features:

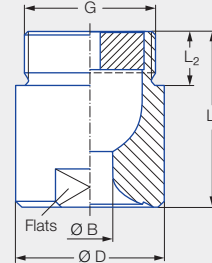
- Extremely uniform liquid distribution

Applications:

- Surface spraying
- Chemical process engineering
- Cleaning and washing processes
- Water treatment



Series 405




Code	G	Dimensions [mm]				Weight [kg] (brass)
		L ₁	L ₂	Ø D	Flats	
AP	1 1/4 BSPP	50.0	19.0	49.0	41	0.5
AR	1 1/2 BSPP	60.0	19.0	59.0	50	0.9
AV	2 BSPP	78.0	24.0	68.0	60	1.6

Spray angle	Ordering no.						Bore diameter B [mm]	Narrowest free cross sections Ø [mm]	V̇ water [l/min]						Spray diameter D [mm] (at p = 2 bar)	
	Type	Mat. no.		Code					p [bar]						H = 500 [mm]	H = 1,000 [mm]
		1Y	30	1 1/4 BSPP	1 1/2 BSPP	2 BSPP			0.3	0.5	1.0	2.0	3.0	5.0		
		Stainless steel 316L	Brass													
60°	405.204	●	●	AP			11.2	5.8	47	57	76	100	118	144	600	1,140
	405.284	●	●		AR		14.3	7.0	75	92	121	160	188	231	630	1,210
	405.324	●	●			AV	16.4	7.5	94	115	152	200	235	289	650	1,250
	405.364	●	●			AV	18.4	8.5	117	144	189	250	294	361	650	1,250
	405.404	●				AV	20.0	7.0	147	181	239	315	370	454	650	1,250
90°	405.206	●	●	AP			12.0	5.0	47	57	76	100	118	144	1,120	2,100
	405.286	●	●		AR		15.2	6.2	75	92	121	160	188	231	1,120	2,100
	405.326	●				AV	17.2	7.7	94	115	152	200	235	289	1,120	2,100
	405.366	●				AV	19.5	8.7	117	144	189	250	294	361	1,120	2,100
	405.406	●	●			AV	22.0	9.5	147	181	239	315	370	454	1,120	2,100
120°	405.208	●	●	AP			12.7	5.0	47	57	76	100	118	144	1,850	3,050
	405.288	●	●		AR		16.0	6.6	75	92	121	160	188	231	1,900	3,150
	405.328	●				AV	17.8	7.9	94	115	152	200	235	289	1,900	3,200
	405.368	●	●			AV	20.1	8.8	117	144	189	250	294	361	1,900	3,200
	405.408	●	●			AV	22.4	9.1	147	181	239	315	370	454	1,900	3,200

Conversion formula for this series: $\dot{V}_2 = \dot{V}_1 \cdot \left(\frac{p_2}{p_1}\right)^{0.4}$
(≤ 10 bar)

Ordering Type + Material no. + Code = Ordering no.
example: 405.204 + 1Y + AP = 405.204.1Y.AP

 Assembly accessories can be found in Chapter 9 "Accessories".